


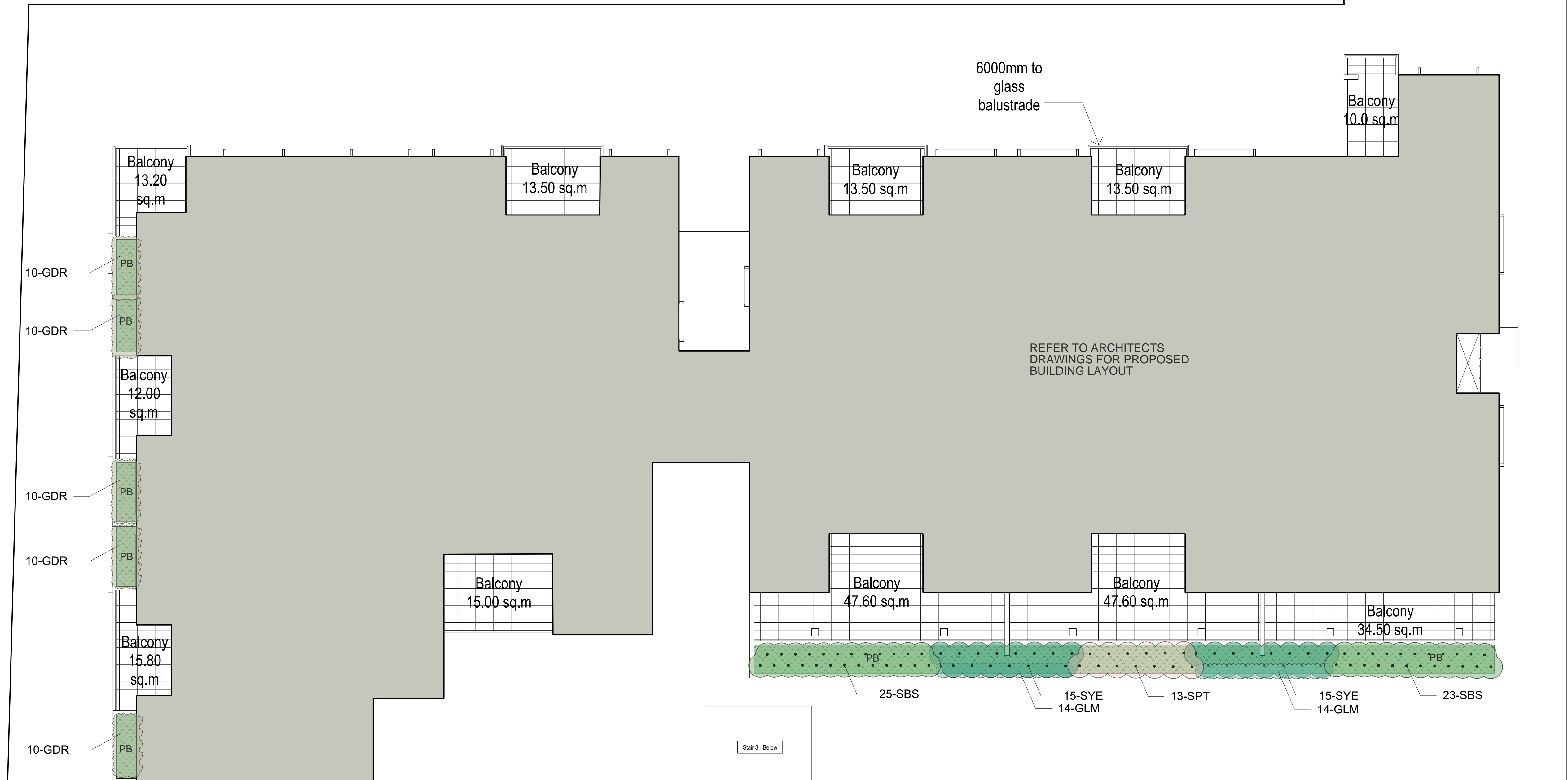


LEGEND

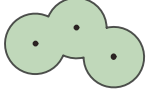
	Proposed shrub plantings
	Proposed groundcover plantings
	Proposed planter bed

- Refer Architects drawings for pavement, walls, fence, steps, and levels
- Refer Engineers drawings for hydraulic information
- Refer L.06 for Plant Schedule, landscape details and specification




<div>GENERAL NOTES:</div> <div><div>1. Do not scale of drawings. Follow written dimensions. If in doubt obtain written advice from the Superintendent.</div><div>2. Verify all dimensions on site.</div><div>3. Refer to legend for all symbol and code keys.</div><div>4. Read in conjunction with the specifications</div><div>5. Read in conjunction with all associated drawings</div></div>	<div>C</div> <div>B</div> <div>A</div>	<div>REVISIONS</div> <div>REVISIONS</div> <div>FOR APPROVAL</div>	<div>CL</div> <div>CL</div> <div>CL</div>	<div>06.11.17</div> <div>18.12.16</div> <div>29.03.16</div>	DESIGNED:	<div>PREPARED FOR:</div> <div>REVELOP PTY LTD</div>	<div>LANDSCAPE ARCHITECTS:</div> <div><div><div></div></div><div>GREENLAND DESIGN Pty Ltd</div><div>ABN 73 139 152 855</div><div>Landscape Architect: C. Ly AILA</div><div>Mob.: 0403 164 198</div></div>	PROJECT:	<div>DRAWING TITLE:</div> <div>Landscape Plan - Level 3 Planters</div>	DATE:	NOVEMBER 2017	
					DRAWN:			<div>SCALE: 1:100</div> <div>FULL SIZE: A1</div>		<div>ISSUE:</div> <div>C</div>		
											<div>PROJECT ADDRESS:</div> <div>NO. 9 - 11 SHERWOOD ROAD MERRYLANDS</div>	<div>DRAWING NO:</div> <div>1297.L-03</div>


LEGEND



Proposed shrub plantings



Proposed groundcover plantings



Proposed planter bed



Notes:

- Refer Achitects drawings for pavement, walls, fence, steps, and levels
- Refer Engineers drawings for hydraulic information
- Refer L.06 for Plant Schedule, landscape details and specification

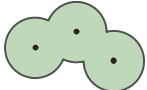


BLOCK A


BLOCK B

GENERAL NOTES: 1. Do not scale of drawings. Follow written dimensions. If in doubt obtain written advice from the Superintendent. 2. Verify all dimensions on site. 3. Refer to legend for all symbol and code keys. 4. Read in conjunction with the specifications 5. Read in conjunction with all associated drawings		REVISIONS FOR APPROVAL		DRAWN	DESIGNED:	PREPARED FOR:	LANDSCAPE ARCHITECTS:	PROJECT:	DRAWING TITLE:	DATE:	NOVEMBER 2017	
					GD						SCALE: 1:100	ISSUE:
					CL						FULL SIZE: A1	C
		ISSUE	AMENDMENT	DATE	CL						DRAWING NO: 1297.L.04	
		C	B	A	CL	06.11.17	GREENLAND DESIGN Pty Ltd ABN 73 139 152 855 Landscape Architect C. Ly AILA Mob.: 0403 164 198	NO. 9 - 11 SHERWOOD ROAD MERRYLANDS	Landscape Plan - Level 4 Planters	 		
					CL	18.12.16						
						29.03.16						


LEGEND



Proposed shrub plantings



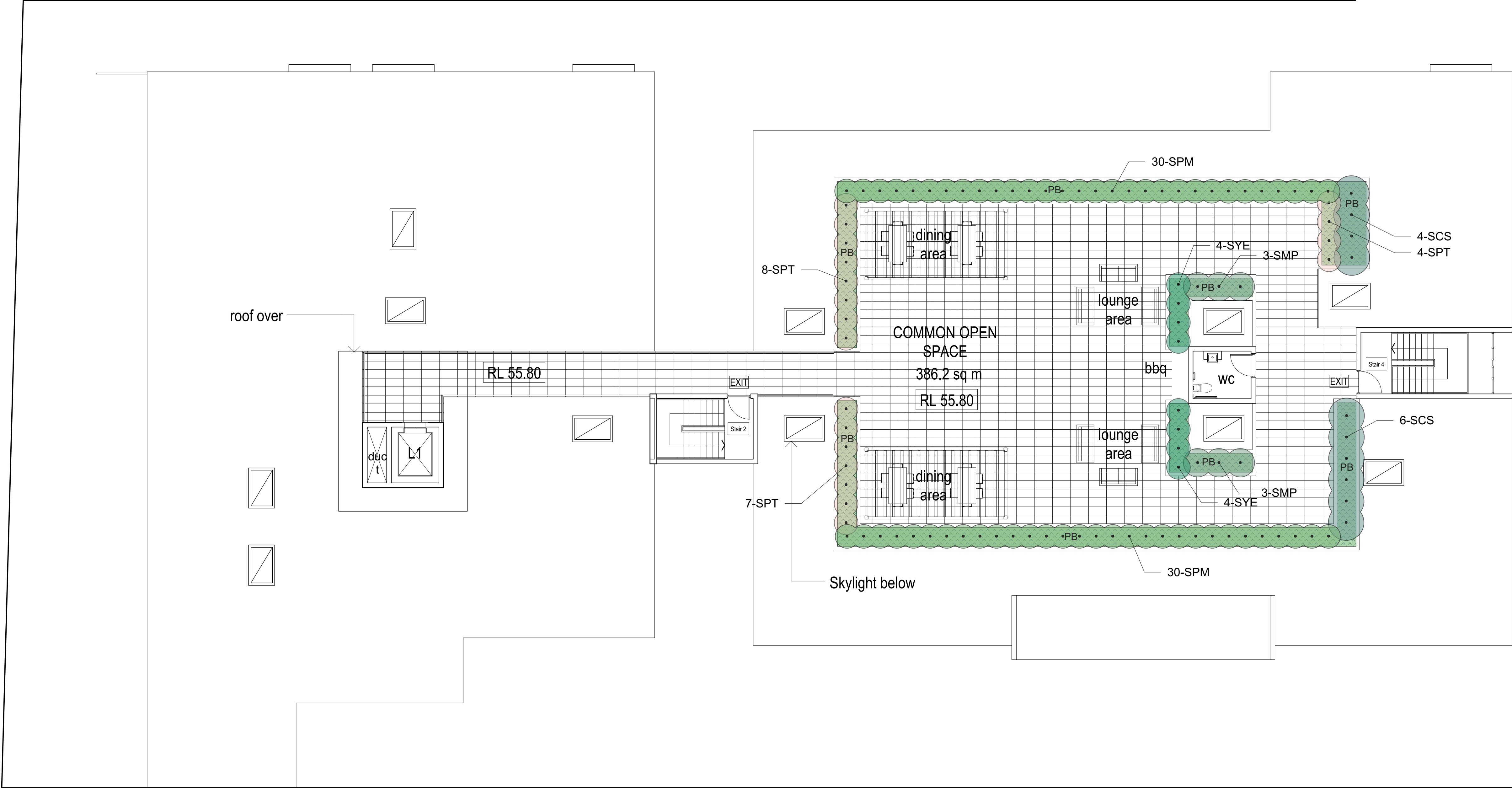
Proposed groundcover plantings



Proposed planter bed



Notes:

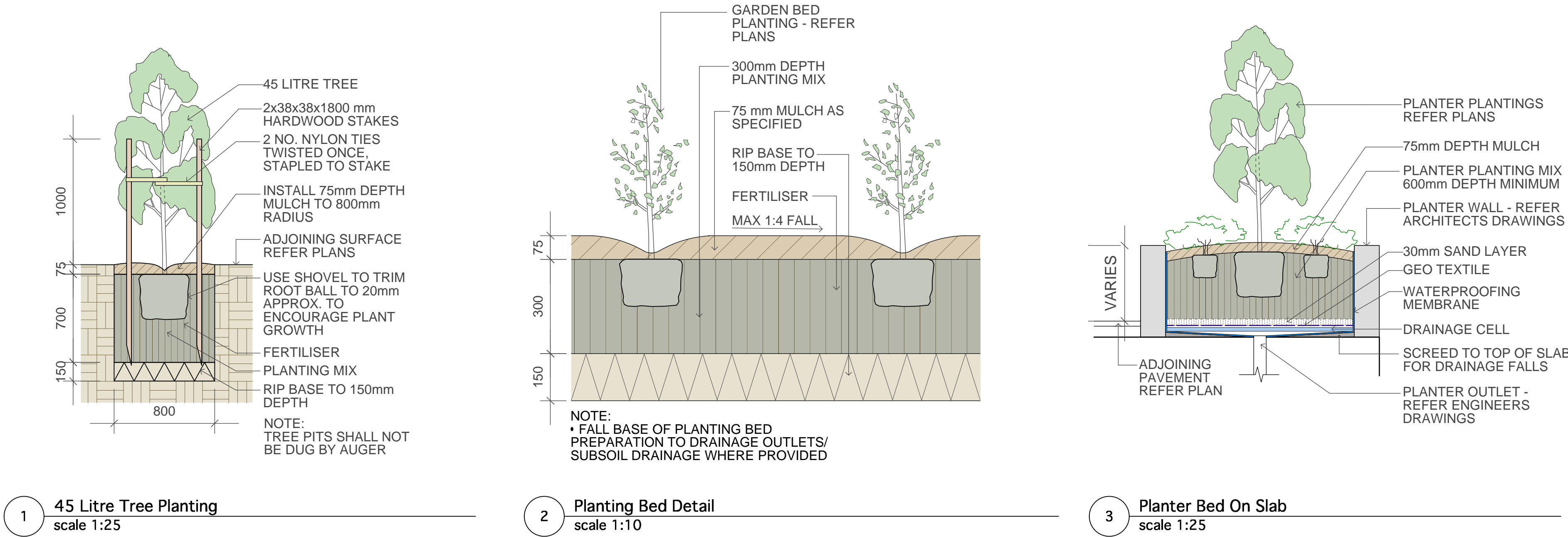
- Refer Achitects drawings for pavement, walls, fence, steps, and levels
- Refer Engineers drawings for hydraulic information
- Refer L.06 for Plant Schedule, landscape details and specification



BLOCK A

BLOCK B

GENERAL NOTES: 1. Do not scale of drawings. Follow written dimensions. If in doubt obtain written advice from the Superintendent. 2. Verify all dimensions on site. 3. Refer to legend for all symbol and code keys. 4. Read in conjunction with the specifications 5. Read in conjunction with all associated drawings	C B A	REVISIONS REVISIONS FOR APPROVAL	CL CL CL	06.11.17 18.12.16 29.03.16	DESIGNED: GD	PREPARED FOR: REVELOP PTY LTD	LANDSCAPE ARCHITECTS:  GREENLAND DESIGN Pty Ltd ABN 73 139 152 855 Landscape Architect: C. Ly AILA Mob.: 0403 164 198	PROJECT: PROPOSED SHOP TOP HOUSING	DRAWING TITLE: Landscape Plan - Level 6	DATE: NOVEMBER 2017
					DRAWN: CL					
ISSUE	AMENDMENT	DRAWN	DATE		PROJECT ADDRESS: NO. 9 - 11 SHERWOOD ROAD MERRYLANDS					
							SCALE: 1:100 FULL SIZE: A1		ISSUE: C	DRAWING NO: 1297.L.05



Plant Schedule						
ID	Qty	Common Name	Botanical Name	Size	Mature Height	Mature Spread
Trees						
THF	4	Native Frangipani	Hymenosporum flavum	45Litre	8 - 12m	3.0 - 4m
TMG	1	Little Gem Southern Magnolia	Magnolia grandiflora 'Little Gem'	45Litre	4 - 6m	2.0 - 3.5m
TTL	10	Water Gum	Tristaniopsis laurina 'Luscious'	45Litre	6 - 8m	3.5 - 6m
Shrubs						
PSW	33	Sensation Spathiphyllum	Spathiphyllum wallisii	250mm pot	1.2-1.5m	1.0 - 1.2m
SAA	3	Century Plant	Agave attenuata	200mm	0.75 - 0.9m	0.6 - 0.9m
SBM	27	Japanese Box	Buxus microphylla var japonica	200mm	0.6 - 0.8m	0.8 - 1.0m
SBS	134	Common Boxwood	Buxus sempervirens	200mm	1 - 1.5m	0.9 - 1.2m
SCJ	5	Camellia	Camellia japonica	200mm	3 - 5m	3.5 - 6m
SCS	19	Sasanqua Camellia	Camellia sasanqua	200mm	3 - 5m	3.5 - 6m
SDS	13	Duranta Gold	Duranta 'Sheenas Gold'	200mm	0.8 - 1.2m	0.9 - 1.2m
SGF	25	Florida Gardenia	Gardenia augusta 'Florida'	200mm	0.8 - 1.0m	0.9 - 1.2m
SMP	34	Orange Jessamine	Murraya paniculata	200mm	1.5 - 3m	3.5 - 6m
SNG	35	Goldfish plant	Nematanthus gregarius	250mm pot	0.6-0.8m	0.6 - 0.8m
SPM	60	Miss Muffet	Pittosporum tobira 'Miss Muffet'	200mm	0.8 - 1.0m	1.2 - 1.5m
SPT	54	New Zealand Flax	Phormium tenax 'Flamin'	200mm	0.6-0.9m	0.8 - 1.0m
SPX	120	Philodendron	Philodendron xanadu	200mm	0.6 - 0.8m	0.7 - 1.0m
SRE	14	Fan Palm	Raphis excelsa	250mm pot	1.2-1.5m	1.0 - 1.2m
SSA	28	Scindapsus	Scindapsus aureus	250mm pot	1.6-1.8m	0.8 - 1.0m
SSR	73	Bird Of Paradise	Strelitzia reginae var juncea	200mm	0.9 - 1.5m	0.9 - 1.2m
SSY	45	Cascade Lilly Pilly	Syzygium 'Cascade'	200mm	2 - 3m	1.2 - 2.0m
SVO	37	Dense Form Viburnum	Viburnum odoratissimum 'Dense Form'	200mm	3 - 4m	2 - 3m
SWB	29	Blue Gem	Westringia 'Blue Gem'	200mm	0.8 - 1.0m	0.9 - 1.2m
SYE	89	Spineless Yucca	Yucca elephantipes	200mm	2.0 - 3.0m	0.8 - 1.2m
Ground Covers						
GCM	128	Bush Lily	Clivia miniata	150mm	0.45 - 0.6m	0.3 - 0.6m
GHP	102	Licorice Plant	Helichrysum petiolare 'Limelight'	150mm	0.3 - 0.45m	0.6 - 0.9m
GHV	32	False Sarsaparilla	Hardenbergia violacea 'Meema'	150mm	0.75 - 0.9m	1.2 - 2.0m
GDR	100	Dichondra 'Silver Falls'	Dichondra repens 'Silver Falls'	150mm	0.0 - 0.3m	0.9 - 1.2m
GLM	251	Giant Lily Turf	Liriope muscari 'Evergreen Giant'	150mm	0.0 - 0.3m	0.0 - 0.3m
GLT	100	Spiny-headed mat rush	Lomandra longifolia 'Tanika'	150mm	0.45 - 0.6m	0.6 - 0.9m
GTA	53	Asian Jasmine	Trachelospermum asiaticum	150mm	n/a	3 - 5m
GTJ	151	Star Jasmine	Trachelospermum jasminoides	150mm	0.3 - 0.6m	1 - 4m

SPECIFICATION NOTES

PLANTING MATERIALS

Planting Mix:

Imported planting mix to planting beds is to comprise an approved soil mix of:

- 60% Soil mix (75% coarse sand and 25% blacksoil)
- 10% Mushroom compost
- 10% Composted sawdust
- 10% Pine bark fines
- 10% Composted manure

Planter Mix:

Planter mix shall be Peat and Planter Mix as supplied by Australian Native Landscape Pty Ltd (ph (02) 9450 1444 or approved equivalent.

Planter Drainage Cell:

Planter drainage cell shall be VersiCell as supplied by Elmich Australia Pty Ltd (ph (02) 9648 2073 or approved equivalent.

Mulch:

Mulch to planter bed:

Mulch shall mean hardwood mulch (25mm grade), free from material derived from Privet, Willow, Poplar, Coral trees, or other noxious weeds. Any mulch exceeding the 25mm grade shall be rejected / removed from the site. Graded hardwood mulch to be supplied by Australian Native Landscapes Pty Ltd Phone (02) 9450 1444, or approved equivalent.

Spread mulch so that after settling, it is:

- smooth and evenly graded between design surface levels;
- flush with adjacent finished levels;
- of the required depths (75mm); and
- sloped towards the base of plant stems in plantation beds, but not in contact with the stem (not closer than 50mm in the case of gravel mulches).

Place after the preparation of the planting bed, planting and all other work.

Plant Material:

All plant material must be true to the species. No substitutes will be allowed. All plants shall be free of fungus and insect damage. All plants shall be healthy, well shaped, not soft or force grown and not root bound.

Tured areas:

All new turfed make good areas if required are to be selected weed free Soft Leaf Buffalo. Turf shall be laid neatly butted with staggered joins, flush with adjacent surfaces and have even running falls to all drainage points.

All new turfed area shall have a minimum 150mm depth of weed free top soil, placed and levelled prior to turfing.

Excavating for Spot Planting

To planting areas, excavate a hole for each plant large enough to provide not less than twice the depth and twice the diameter than the root ball of species to be planted.

Staking

Use durable hardwood, straight, free from knots or twists, pointed at one end. Drive stakes into the ground a minimum one third of their length, avoiding damage to the root system.

- 45 Litre trees in 2 x 38x38x1800mm Hardwood Stake with double Nylon tie TIES: Provide a 50mm wide Nylon webbing tie per stake, fixed securely to the stakes, one tie at half the height of the main stem and the other as necessary to stabilise the plant.

MAINTENANCE / PLANT ESTABLISHMENT

Maintenance shall apply to all hard and soft landscape materials installed prior to the "handover" and acceptance by Principles Representative and the Site Superintendent. The maintenance period shall convenience at the granting of practical completion and shall extend for 26 weeks.

Maintenance shall consist of the following works:

- Follow a daily watering programme to be approved by Superintendent. Water all plants individually, twice per week or when necessary to ensure constant plant growth. Water all turf and native grassed areas, twice per week.
- Apply appropriate weed control sprays and hand weed as required to maintain planting areas, native grassing bed areas, turfed areas, paved areas, and tree pits in turf free of weed or rogue grass growth.
- Regularly tidy and top up mulch and trim edges to prevent spill over onto paved / grassed areas.
- Spray to control pests and diseases.
- Replace plants, which fail with plants of a similar size and quality as originally specified to approval of Superintendent. Costs of replacement shall be the responsibility of the Contractor. Replacement planting will be undertaken within 2 weeks of identification of dead material or instruction be the Superintendent.
- Report any incidence of plants stolen or destroyed by vandalism.
- Adjust stakes and ties to plants as necessary. Ensure that strangulation of plants does not occur.
- Prune and shape plants as directed or where necessary.
- Make good any defects or faults arising out of defective workmanship or materials.
- Fertilise lawn areas to maintain healthy growth.
- Make good any erosion or soil subsidence, which may occur including soft areas in pathways.
- Mow lawn to maintain neat healthy growth.
- A final inspection shall be made by the Superintendent before handover. Any items requiring rectification shall be repaired before the works are finally approved, and retention moneys released.

NOTE:

- All finished levels are to be verified by Contractor on site.
- All landscape works be in strict accordance with Council's landscape code and guidelines
- This plan to be used in conjunction with all other submitted architectural, hydraulics and engineering drawing where applicable.

IRRIGATION SYSTEM AND REQUIREMENTS

DESCRIPTION OF WORKS

The scope of works in this section comprises the design and specification (for comment by Superintendent), supply, and installation of fully automated commercial drip irrigation system to all landscaped areas and to Councils requirements.

The general location and extent of the areas to be irrigated is as shown on plans and includes:

- Planter bed areas to be irrigated by "Techline" dripline at 750mm intervals, capable of delivering 20mm / week.
- Garden bed areas to be irrigated by "Techline" dripline at 750mm intervals, capable of delivering 20mm / week.
- Turfed areas to be irrigated by "Uniram" dripline at 500mm intervals, capable of delivering 30mm / week.

The Contractor shall provide shop drawings and materials and equipment specifications for comment by the Superintendent. Notwithstanding comments on the irrigation design being provided by the Superintendent responsibility for the technical design, operation and adequacy of performance of the irrigation system will remain with the Contractor.

The irrigation works shall include all mechanical, hydraulic requirements to the performances required and includes but is not limited to the following:

- Design of dripline irrigation system and related hydraulic / electrical works for approval by the relevant authorities and for comment by the Superintendent.
- Attainment of all relevant authority approvals and inspections.
- Connection to water service
- Construction and testing of new irrigation pipework
- Instruction of operators.
- Maintenance of continuity of use, repair and/or replacement of utility services affected by the installation of the irrigation system.
- Excavation, shoring, dewatering and backfilling in all classes of material.
- Modification of existing structures commissioning of all works constructed under this project.
- All other works necessary for the required performance of the irrigation system.
- Excavation & backfill
- Maintenance period of 12 months.
- A minimum warranty period of 12 months for parts and labour on pumps, control system components and irrigation components.
- Visit site once a month during the warranty period to check the and monitor performance of the equipment and operators.

FEES PERMITS AND APPROVALS

The Contractor shall be responsible for securing all necessary inspections and approvals. Before commencement of any works on the site the Contractor shall obtain approval from the Superintendent for the works to proceed and submit the necessary notification forms to all authorities having jurisdiction. These shall include but are not limited to the following:

- Connection Fees & Inspection Fees - Water Authority
- Document Inspection Fees - Water Authority
- Service Connection Charges - Water Authority

The Contractor shall pay all fees, permits, royalties, deposits, and charges and shall produce documentary evidence to the Superintendent upon request.

EXISTING FACILITIES, UTILITIES AND SERVICES

The Contractor's attention is drawn to the existence of utility services within the works site. The Contractor shall be fully responsible for ascertaining exact locations and levels of services or consumer mains which may be encountered during the course of the works. The Contractor shall liaise and consult with services authorities as required during the course of the project.


Any damage to services or infrastructure facilities caused by any actions of the Contractor shall be repaired entirely to the satisfaction of the owner of such services and costs incurred shall be borne solely by the Contractor.

When a service must be interrupted to enable the carrying out of works under this contract such interruption shall be at a time agreed with the responsible authority or owner and the Superintendent. The Contractor shall organise and be responsible for all necessary notifications and approvals required.

Costs of relocation diversion, temporary removal and replacement of any service shall be borne by the Contractor.

DRIPLINE SYSTEM

Fully automated commercial grade "Techline" and "Uniram" dripline system or approved equivalent to be installed as per manufacturers specification and recommendations.

<div>GENERAL NOTES:</div> <div>1. Do not scale of drawings. Follow written dimensions. If in doubt obtain written advice from the Superintendent.</div> <div>2. Verify all dimensions on site.</div> <div>3. Refer to legend for all symbol and code keys.</div> <div>4. Read in conjunction with the specifications</div> <div>5. Read in conjunction with all associated drawings</div>					C B A	REVISIONS REVISIONS FOR APPROVAL	CL CL CL	06.11.17 18.12.16 29.03.16	DESIGNED:	PREPARED FOR: REVELOP PTY LTD	LANDSCAPE ARCHITECTS: <div></div> <div>GREENLAND DESIGN Pty Ltd</div> <div>ABN 73 139 152 855</div> <div>Landscape Architect: C. Ly AILA</div> <div>Mob.: 0403 164 198</div>	PROJECT:	DRAWING TITLE: Landscape Details & Specification	DATE: NOVEMBER 2017		
												DRAWN:			SCALE: varies	ISSUE:
															FULL SIZE: A1	C
												PROJECT ADDRESS:	DRAWING NO:			
												NO. 9 - 11 SHERWOOD ROAD MERRYLANDS	1297.L.06			